

Induction Cooker

IC-270B-BT



IC-350B-BT



IDC-WB3100



IC-800A



Model	IC-270B-BT	IC-350B-BT	IDC-WB3100	IC-800A
Description	Induction Cooker	Induction Cooker	Induction Cooker	Induction Cooker
Feature	LCD Display	LCD Display	LCD Display	Konb Control
Electronic Overheating Protection	V	V	V	V
Volts	220~240V/ 50~60Hz	220~240V/50Hz	220~240V/50Hz	380~400V/50Hz
Power(W)	500-2700	500-3500	500-3100	500-8000
Material	Stainless Steel	Stainless Steel	Stainless Steel	Stainless Steel
Temperature Range	60-240°C	60-240°C	60-240°C	-
Dimensions (mm)	300x370x100	340x445x115	352x407x115	540x500x180
Timer	0-180min	0-180min	0-180min	-
Certificate	CE	CE	CE	CE

Induction Cooker



CE500-126



CE500-127

Model	CE500-126	CE500-127
Description	Induction Cooker	Induction Wok
Feature	LCD Display	LCD Display
Ceramic Glass	Without Polish	Polishing
Electronic Overheating Protection	Y	Y
Volts	220~240V/50~60Hz	220~240V/50~60Hz
Power	500-3500W	500-3500W
Material	S/S 0.8mm	S/S 0.8mm
Temperature	60~240°C	60~240°C
Dimensions (mm)	425x330x105	425x340x135
Timer	0-180min	0-180min
Cooling Fans	2pcs	2pcs
Certificate	CE	CE

Induction Cooker

IC-35E



IC-35D



IC-350KC



IC-350KC1



Model	IC-35E	IC-35D	IC-350KC	IC-350KC1
Description	Induction Cooker	Induction Cooker	Induction Cooker	Induction Cooker
Feature	Touch Control LCD Display	Touch Control LCD Display	LCD Display	LCD Display
Electronic Overheating Protection	V	V	V	V
Volts	220~240V/50Hz	220~240V/50Hz	220~240V/50Hz	220~240V/50Hz
Power(W)	500-3500	500-3500	500-3500	500-3500
Material	Stainless Steel	Stainless Steel	Stainless Steel	Stainless Steel
Temperature Range	60-240°C	60-240°C	60-240°C	60-240°C
Dimensions (mm)	338x395x120	340x440x117	340X440X117	340X440X117
Timer	0-180min	0-180min	0-180min	0-180min
Certificate	CE	CE	CE	CE

Induction Cooker



IT 29



IT 28



EIT2

Model	IT 29	IT 28	EIT2
Description	Induction Cooker	Induction Cooker	Induction Cooker
Feature	Touch Control LED Display	Touch Control LED Display	Touch Control LED Display
Electronic Overheating Protection	V	V	V
Volts	220~240V/50Hz	220~240V/50Hz	220~240V/50Hz
Power(W)	500-2700	500-2700	500-2000
Material	Stainless Steel	Stainless Steel	Stainless Steel
Temperature Range	60-240°C	60-240°C	60-240°C
Dimensions (mm)	320x368x106	337x425x75	310x380x53
Timer	0-180min	0-180min	0-180min
Certificate	CE	CE	CE

Induction Cooker



IC-350A3



IC-350K1

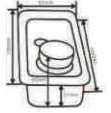
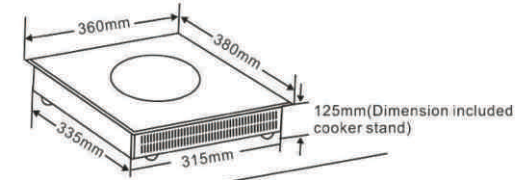


IC-350K

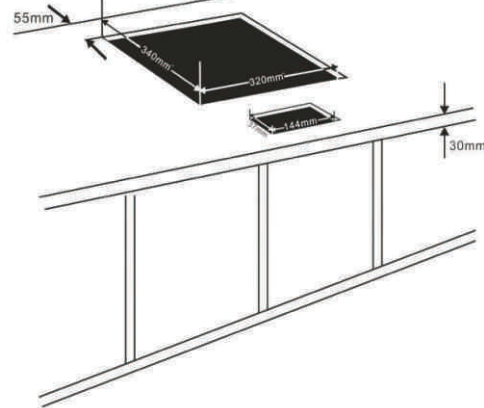
Model	IC-350A3	IC-350K1	IC-350K
Description	Induction Cooker	Induction Cooker	Induction Cooker
Feature	Knob Control	Knob Control	LED Display
Electronic Overheating Protection	V	V	V
Volts	220~240V/50Hz	220~240V/50Hz	220~240V/50Hz
Power(W)	500-3500	500-3500	500-3500
Material	Stainless Steel	Stainless Steel	Stainless Steel
Temperature Range	-	-	60-240°C
Dimensions (mm)	340x445x117	327x420x98	340x440x117
Timer	-	-	0-180min
Certificate	CE	CE	CE

Induction Cooker

IC-350T



IC-350TA



Model	IC-350T	IC-350TA
Description	Induction Cooker	Induction Cooker
Feature	Touch and Knob Control	Touch and Knob Control
Electronic Overheating Protection	✓	✓
Volts	220~240V/50Hz	220~240V/50Hz
Power(W)	500-3500	500-3500
Material	Stainless Steel	Stainless Steel
Temperature Range	60-240°C	60-240°C
Dimensions (mm)	360x380x125	360x380x125
Certificate	CE	CE

Induction Cooker



IC-200T1



IT18

Model	IC-200T1	IT18
Description	Induction Cooker	Induction Cooker
Feature	Touch Control	Touch Control
Electronic Overheating Protection	V	V
Volts	220~240V/50Hz	220~240V/50Hz
Power(W)	500-2000	500-1800
Material	Plastic	Plastic
Temperature Range	60-240°C	60-240°C
Dimensions (mm)	302x372x77	295x357x72
Certificate	CE	CE