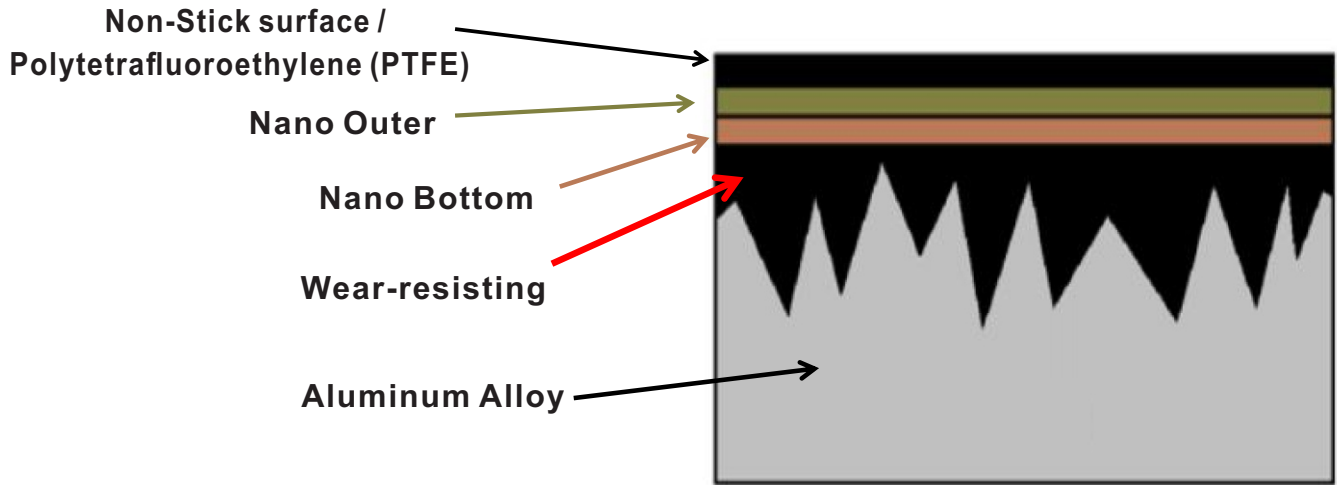


Baking And Grill Tray

Structural Analysis:



Performance Comparison:

Surface Treatment	Aluminum alloy	Commonly Non-Stick surface	Non-Stick surface / polytetrafluoroethylene (PTFE)
Contact Angle	63°	85°	120°

Feature And advantage:

Surface Treatment	Hard Film Treatment	Commonly Non-Stick surface	Potent Non-Stick surface	Non-Stick surface / polytetrafluoroethylene (PTFE)
Temperature Limitation	300°C	260°C	260°C	260°C
Service life	≥20000	≥1200	≥2000	≥3000
Feature	Scratch Resistant Easy to absorb heat	Easy Fall Of	Easy Fall Of Easy Clean	Easy Fall Of Easy Clean

Standard Pan

1 Non-Stick Surface / polytetrafluoroethylene (PTFE) (*3 Layer Coated)

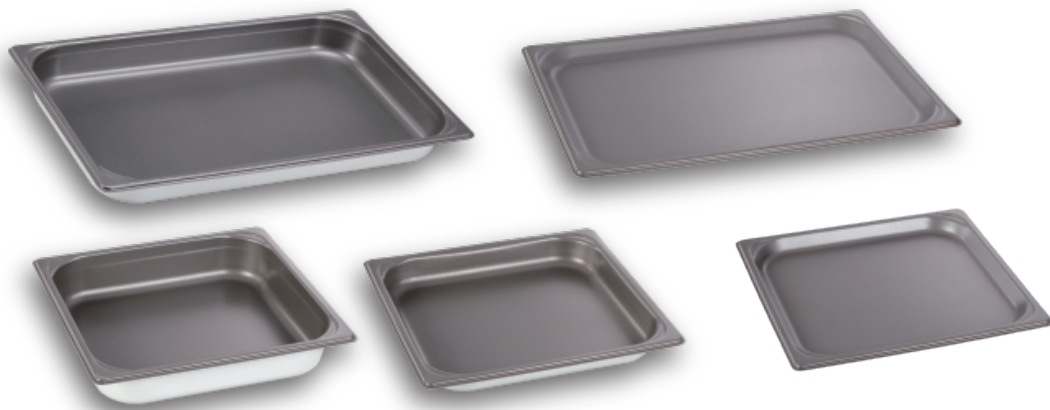
- The best non-stick coating, is the technique in cooperation with the Taiwanese Industrial Technology Research Institute.
- The revolutionary far infrared heating-reflecting features heat food from both "inside and outside" instead of traditional "outside-in" This helps preserve moisture and flavor.
- Much better non-stickness and durability.
- Two times scratch resistant than other leading brands.
- Coating is certified under FDA regulation 175.300 by SGS. Verified PFOA-free and PFOS-free by SGS.

2 Non-Stick Surface / polytetrafluoroethylene (PTFE) (*2 Layer Coated)

- Designed to meet the needs of the commercial users. It uses the material from well-known brand, and is coated by 40-years' experienced factory, Sun-Li Industrial, to fully present the superb nonstick properties.
- All the items of stainless steel series are made by 18-8 stainless alloy.
- Porcelain enamel is a corrosion resistant material.
- Over 400 degree Celsius heat resistance, and the hardness is up to 700 HV.
- All enameled products are certified by SGS under FDA regulation of food container.

All products Proudly Made in Taiwan.

***Surface Finish : Non-Stick surface / polytetrafluoroethylene (PTFE)**



Suitable for | risotto , spaghetti , rice and noodle.

OT210-100 *3 Layer Coated

GN size : 1/1 GN
Mould DIM. : 530×325×65 (mm)
Thickness : 1.2 mm
Weight : 830 g

OT210-102 *3 Layer Coated

GN size : 1/1 GN
Mould DIM. : 530×325×20 (mm)
Thickness : 1.5 mm
Weight : 750 g

OT210-120 *3 Layer Coated

GN size : 2/3 GN
Mould DIM. : 354×325×65 (mm)
Thickness : 1.2 mm
Weight : 545 g

OT210-122 *3 Layer Coated

GN size : 2/3 GN
Mould DIM. : 354×325×40 (mm)
Thickness : 1.2 mm
Weight : 480 g

OT210-124 *3 Layer Coated

GN size : 1/1 GN
Mould DIM. : 354×325×20 (mm)
Thickness : 1.2 mm
Weight : 430 g

Perforated Pan & Grill Pan

*Surface Finish : Non-Stick surface / polytetrafluoroethylene (PTFE)



Suitable for | Steaming vegetable , beans , Dim-Sum.

OT210-101 *3 Layer Coated

GN size : 1/1 GN
Mould DIM. : 530×325×65 (mm)
Thickness : 1.2 mm
Perforation Diameter : 6 mm
Weight : 760 g

OT210-103 *3 Layer Coated

GN size : 1/1 GN
Mould DIM. : 530×325×20 (mm)
Thickness : 1.5 mm
Perforation Diameter : 6 mm
Weight : 715 g

OT210-121 *3 Layer Coated

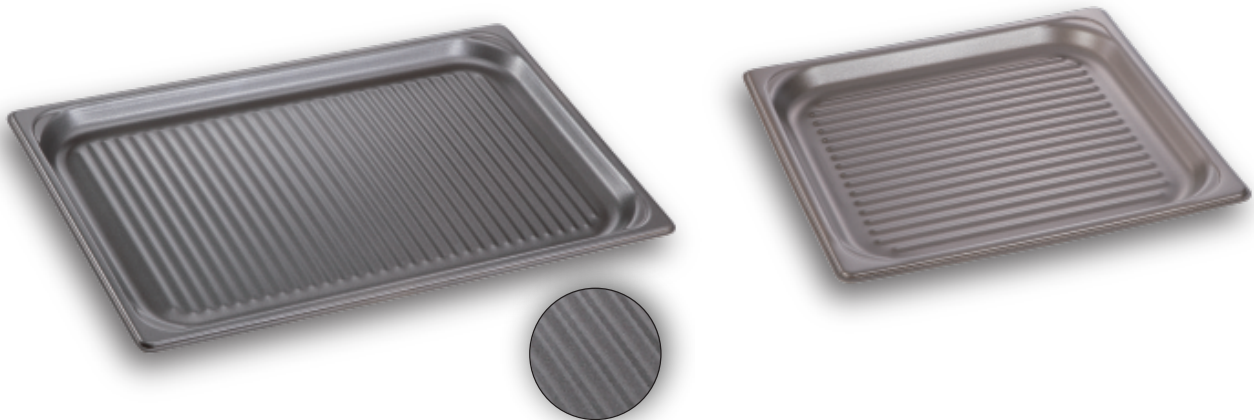
GN size : 2/3 GN
Mould DIM. : 354×325×65 (mm)
Thickness : 1.2 mm
Perforation Diameter : 6 mm
Weight : 530 g

OT210-123 *3 Layer Coated

GN size : 2/3 GN
Mould DIM. : 354×325×40 (mm)
Thickness : 1.2 mm
Perforation Diameter : 6 mm
Weight : 460 g

OT210-125 *3 Layer Coated

GN size : 2/3 GN
Mould DIM. : 354×325×20 (mm)
Thickness : 1.2 mm
Perforation Diameter : 6 mm
Weight : 400 g



Suitable for | Fish fillet , chicken fillet , sea food , mushroom , cucumber and zucchini.

OT210-104 *3 Layer Coated

GN size : 1/1 GN
Mould DIM. : 530×325×20 (mm)
Thickness : 1.5 mm
Stripe width : 10 mm
Weight : 750 g

OT210-126 *3 Layer Coated

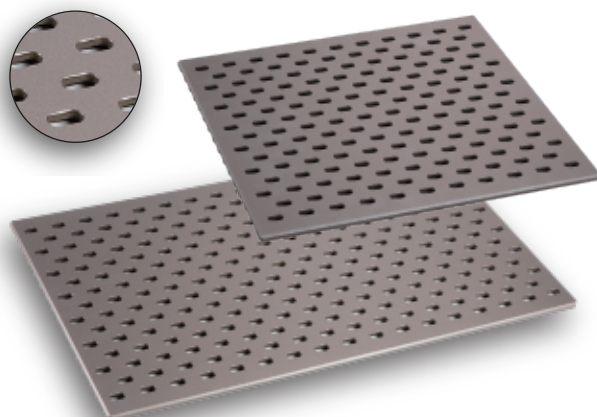
GN size : 2/3 GN
Mould DIM. : 354×325×20 (mm)
Thickness : 1.2 mm
Stripe width : 10 mm
Weight : 430 g

Cleaning Advise:

1. Washing per day is strongly suggested.
2. If the grease is carbonized, and hard to remove. It is suggested to soak it in the water for at least, 20 minutes and then wash it with detergent and a soft sponge.

Multifunctional Grill Tray

*Surface Finish : Non-Stick surface / polytetrafluoroethylene (PTFE)



Bake side :
Perforated and flat designs makes food
with crispy surface and juicy inside.

Suitable for | Grill side : Steak , Pork chop , lamb chop , fish fillet , chicken.
Bake side : burger , Pizza , Pastries.

Grill and bake two-side tray
Excellent heat conduction
Perfect grill lines
Patented nonstick coating

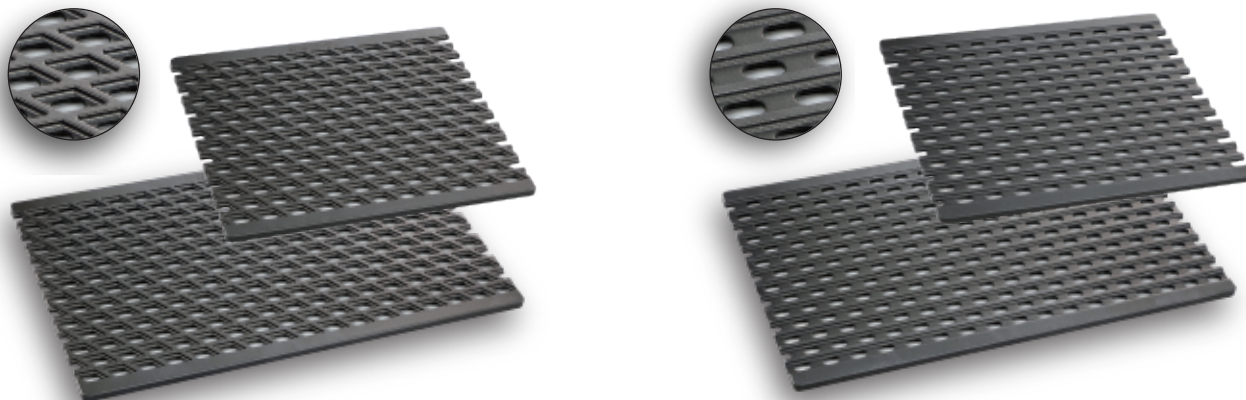
OT210-129 *3 Layer Coated

GN size : 2/3 GN
Mould DIM. : 354×325×8.0 (mm)
Stripe width : 4.6 mm

Weight : 1480 g

Cross And Stripes Grill Tray

*Surface Finish : Non-Stick surface / polytetrafluoroethylene (PTFE)



Suitable for | Steak , fish fillet , chicken.

Both sides,cross grill side and stripe grill side ,usable.
Heavy duty griddle,excellent heat conduction.
Perfect and nice cross pattern ,and the traditional
grill pattern.
Patented design.

OT210-108 *3 Layer Coated

GN size : 1/1 GN
Mould DIM. : 530×325×10 (mm)
Weight : 2570 g

OT210-130 *3 Layer Coated

GN size : 2/3 GN
Mould DIM. : 354×325×10 (mm)
Weight : 1700 g

Cleaning Advise:

- 1.Washing per day is strongly suggested.
- 2.If the grease is carbonized, and hard to remove.
It is suggested to soak it in the water for at least, 20 minutes and then wash it with detergent and a soft sponge.

Egg Pan

*Surface Finish : Non-Stick surface / polytetrafluoroethylene (PTFE)



Makes nice and uniform shape of eggs.
Suitable to process a great amount of food at the same time.
Keeps grease inside the mould, and makes chicken or fish fillet crispy.

Suitable for | Eggs , sunny side up eggs , omelet and chicken popcorn

OT210-105 *2 Layer Coated

GN size : 1/1 GN
Mould DIM. : 530×325×11.5 (mm)
Thickness : 2.0 mm
Weight : 1030 g

Single Egg Mould DIM
Top Diameter : 120 mm
Bottom Diameter : 83 mm
Height : 15 mm

OT210-128 *2 Layer Coated

GN size : 2/3 GN
Mould DIM. : 354×325×11.5 (mm)
Thickness : 2.0 mm
Weight : 650 g

Single Egg Mould DIM
Top Diameter : 120 mm
Bottom Diameter : 83 mm
Height : 15 mm

Right Angle Egg Pan

*Surface Finish : Non-Stick surface / polytetrafluoroethylene (PTFE)



Cook eggs with right angle and at the edge.
Maximum production capability :
12 eggs for 1/1 GN size
8 eggs for 2/3 GN size
Best size for breakfast egg and burger egg.

Suitable for | Omelet , breakfast egg , Pancake

OT210-106 *2 Layer Coated

GN size : 1/1 GN
Mould DIM. : 530×325×10 (mm)
Weight : 1050 g

Single Egg Mould DIM
Top Diameter : 85 mm
Bottom Diameter : 82 mm
Height : 15 mm

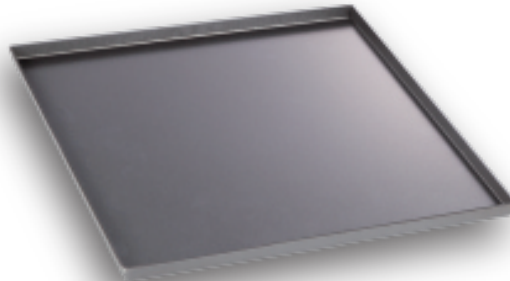
OT210-127 *2 Layer Coated

GN size : 2/3 GN
Mould DIM. : 354×325×10 (mm)
Weight : 670 g

Single Egg Mould DIM
Top Diameter : 85 mm
Bottom Diameter : 82 mm
Height : 15 mm

Thick Flat Tray

*Surface Finish : Non-Stick surface / polytetrafluoroethylene (PTFE) and hard anodizing



Suitable for | Fish fillet , steak , lamb chop and barbecue.

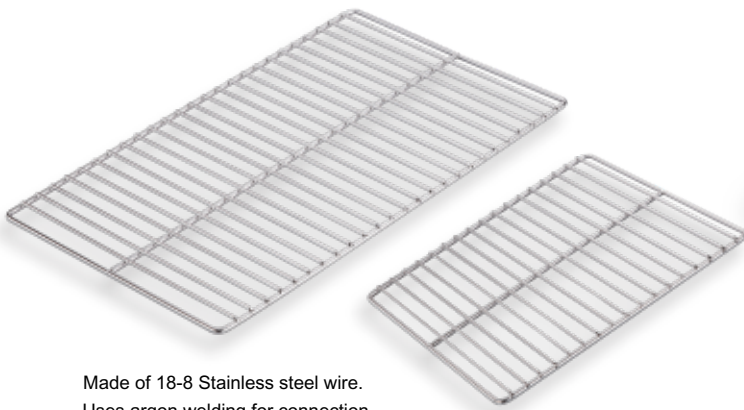
Heavy-duty, design for commercial usage.
Increasing the thickness up to 2.5 mm.
Standard flat tray :
Widely used for all kind of food.
Most popular accessory of a combi-oven.
Excellent non-stick property.

OT210-137 *2 Layer Coated

GN size : 1/2 GN
Mould DIM. :
265×325×13 (mm)
Thickness : 2.0 mm
Weight : 500 g

Stainless Steel Wire Rack

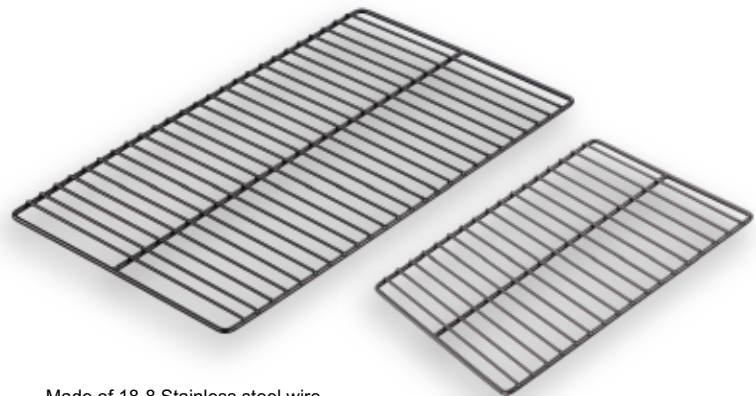
*Surface Finish : Electrolysis



Made of 18-8 Stainless steel wire.
Uses argon welding for connection.

Nonstick Stainless Steel Wire Rack

*Surface Finish : Non-Stick surface / polytetrafluoroethylene (PTFE)



Made of 18-8 Stainless steel wire.
Uses argon welding for connection.
Premium nonstick coating applied

Suitable for | Chicken wings, Chicken thigh,
pork knuckle and barbecue.

OT210-112

GN size : 1/1 GN
Mould DIM. : 530×325 (mm)
Outer Frame : 6 mm
Inner Frame : 4 mm
Weight : 1290 g

OT210-133

GN size : 2/3 GN
Mould DIM. : 354×325 (mm)
Outer Frame : 6 mm
Inner Frame : 4 mm
Weight : 900 g

OT210-113 *3 Layer Coated

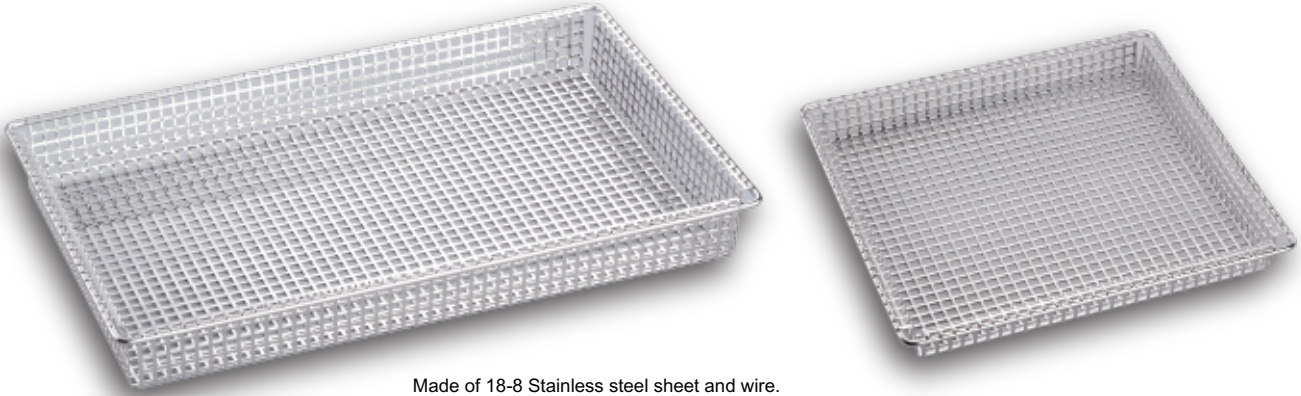
GN size : 1/1 GN
Mould DIM. : 30×325 (mm)
Outer Frame : 6 mm
Inner Frame : 4 mm
Weight : 1290 g

OT210-134 *3 Layer Coated

GN size : 2/3 GN
Mould DIM. : 354×325 (mm)
Outer Frame : 6 mm
Inner Frame : 4 mm
Weight : 900 g

Stainless Steel Grid Basket

*Surface Finish : Electrolysis



Made of 18-8 Stainless steel sheet and wire.
Tough and heavy-duty.

Suitable for | French Fries , steaming vegetables ,
beans and chicken nuggets.

OT210-114

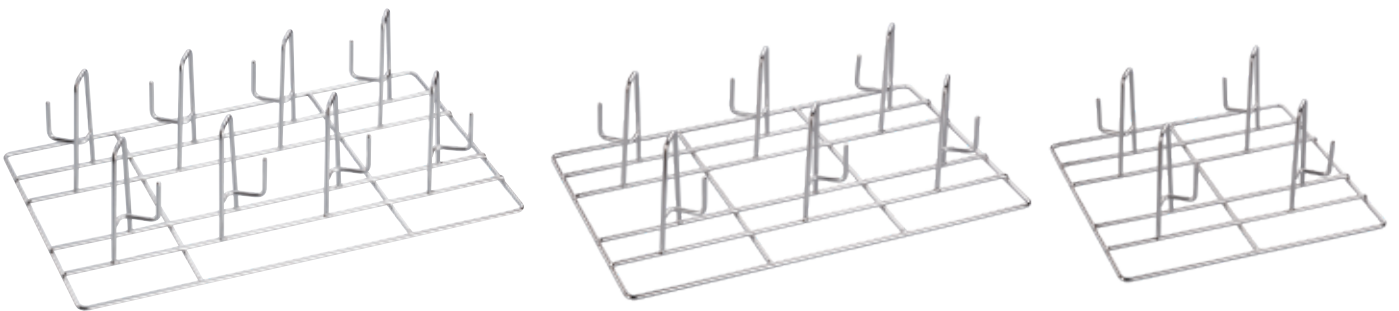
GN size : 1/1 GN
Mould DIM. : 530×325×37 (mm)
Thickness : 1.2 mm
Weight : 1250 g

OT210-135

GN size : 2/3 GN
Mould DIM. : 354×325×37 (mm)
Thickness : 1.2 mm
Weight : 910 g

Chicken Rack

*Surface Finish : Electrolysis



Suitable for | Roast chicken , turkey , roast duck.

OT210-116

GN size : 1/1 GN
Mould DIM. : 530×325×148 (mm)
Wire Diameter : 6.0 mm
Capacity : 8 pcs
Weight : 1700 g

OT210-115

GN size : 1/1 GN
Mould DIM. : 530×325×148 (mm)
Wire Diameter : 6.0 mm
Capacity : 6 pcs
Weight : 1600 g

OT210-136

GN size : 2/3 GN
Mould DIM. : 354×325×148 (mm)
Wire Diameter : mm
Capacity : 4 pcs
Weight : 1040 g

Enameled Pan

*Surface Finish : Electrolysis



Suitable for | stew , curry , soup.

OT210-117

GN size : 1/1 GN
Mould DIM. : 530×325×65 (mm)
Thickness : 1 mm
Weight : 2150 g

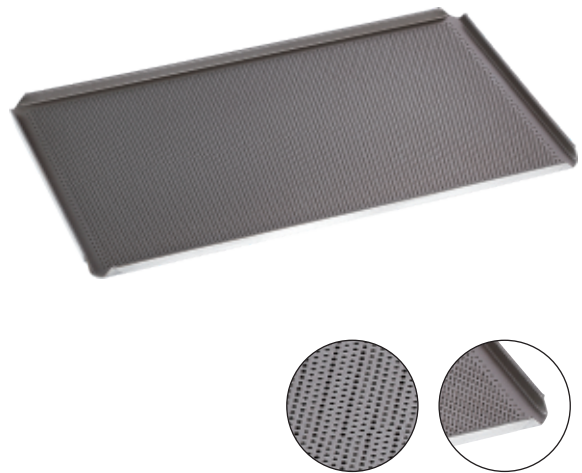
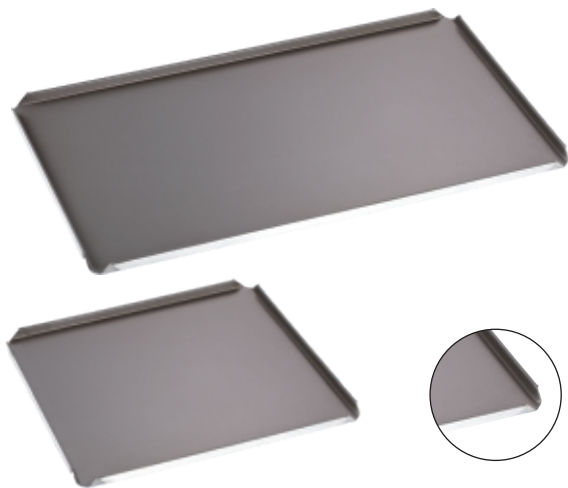
OT210-119

GN size : 1/1 GN
Mould DIM. : 530×325×25 (mm)
Thickness : 1 mm
Weight : 1850 g

Flat Baking Tray

Perforated Baking Tray

*Surface Finish : Non-Stick surface / polytetrafluoroethylene (PTFE)



Suitable for | bread , bun , cookies

Suitable for | cookies , croissant.

OT210-110 *2 Layer Coated

GN size : 1/1 GN
Mould DIM. : 530×325×13 (mm)
Thickness : 2.0 mm
Weight : 1070 g

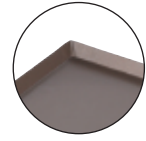
OT210-132 *2 Layer Coated

GN size : 2/3 GN
Mould DIM. : 354×325×13 (mm)
Thickness : 1.5 mm
Weight : 526 g

OT210-111 *2 Layer Coated

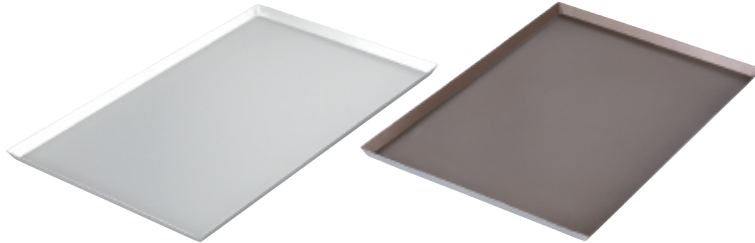
GN size : 1/1 GN
Mould DIM. : 530×325×13 (mm)
Thickness : 2.0 mm
Perforation Diameter : 2 mm
Weight : 850 g

Tray Of Baking Size



*Surface Finish : anodizing

*Surface Finish : Non-Stick surface / polytetrafluoroethylene (PTFE)

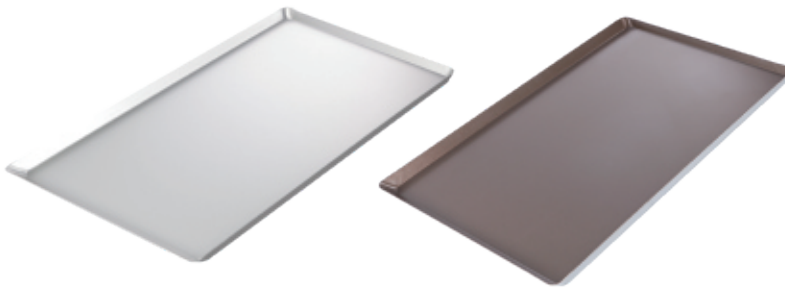
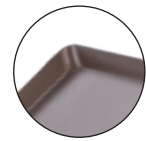


OT210-138

Mould DIM. :
600×400×20 (mm)
Thickness : 1.5 mm
Weight : 1050 g

OT210-139 *1 Layer Coated

Mould DIM. :
600×400×20 (mm)
Thickness : 1.5 mm
Weight : 1050 g

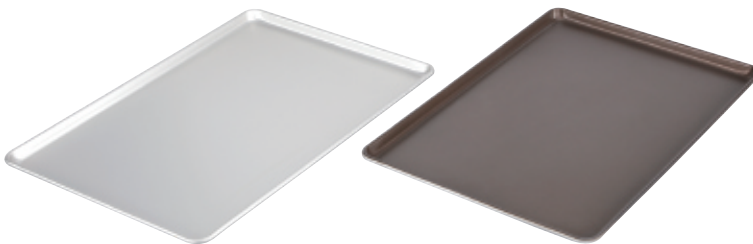
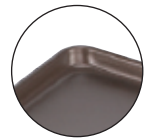


OT210-140

Mould DIM. :
600×400×20 (mm)
Thickness : 1.5 mm
Weight : 1050 g
Surface Finish : anodizing

OT210-141 *1 Layer Coated

Mould DIM. :
600×400×20 (mm)
Thickness : 1.5 mm
Weight : 1050 g

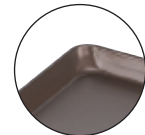


OT210-142

Mould DIM. :
600×400×20 (mm)
Thickness : 1.2 mm
Weight : 1000 g
Surface Finish : anodizing

OT210-143 *1 Layer Coated

Mould DIM. :
600×400×20 (mm)
Thickness : 1.2 mm
Weight : 1000 g



OT210-144

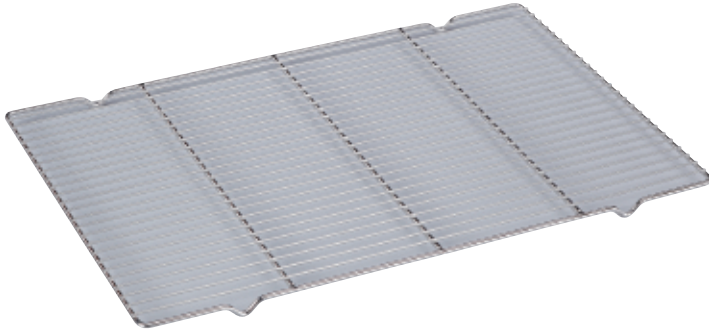
Mould DIM. :
660×460×30 (mm)
Thickness : 1.5 mm
Weight : 1580 g
Surface Finish : anodizing

OT210-145 *1 Layer Coated

Mould DIM. :
660×460×30 (mm)
Thickness : 1.5 mm
Weight : 1580 g

Stainless Steel Wire Rack

*Surface Finish : Electrolysis



OT210-146

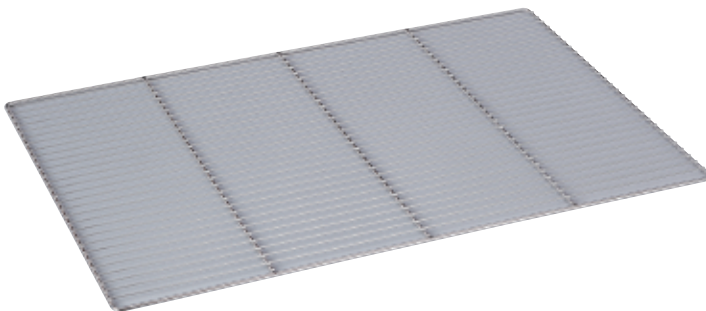
Mould DIM. :
720×460×20 (mm)
Outer Frame : 6 mm
Inner Frame: 2.3 mm
Weight : 1490 g

OT210-147

Mould DIM. :
675×435×20 (mm)
Outer Frame : 6 mm
Inner Frame : 2.3mm
Weight : 1390 g

OT210-148

Mould DIM. :
600×400×20 mm
Outer Frame : 6 mm
Inner Frame : 2.3mm
Weight : 1300 g



OT210-149

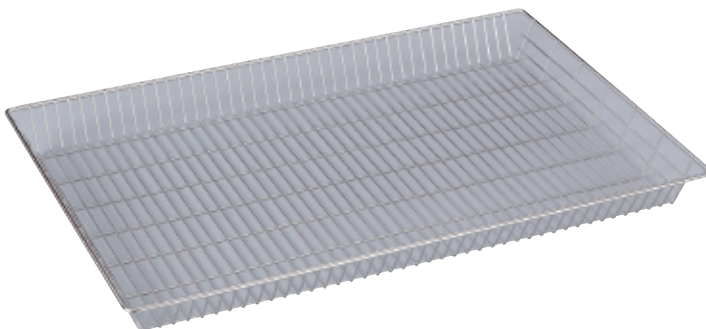
Mould DIM. :
720×460×8 (mm)
Outer Frame : 6 mm
Inner Frame : 2.3mm
Weight : 1470 g

OT210-150

Mould DIM. :
675×435×8 (mm)
Outer Frame : 6 mm
Inner Frame : 2.3mm
Weight : 1370 g

OT210-151

Mould DIM. :
600×400×8 mm
Outer Frame : 6 mm
Inner Frame : 2.3mm
Weight : 1200 g



OT210-152

Mould DIM. :
720×460×55 (mm)
Outer Frame : 6 mm
Inner Frame : 2.3mm
Weight : 1480 g

OT210-153

Mould DIM. :
675×435×55 (mm)
Outer Frame : 6 mm
Inner Frame : 2.3mm
Weight : 1350 g

Multi-Functional Grill Tray

*Surface Finish : polytetrafluoroethylene (PTFE)



OT210-154 *3 Layer Coated

GN size : 1/1 GN
Spec. : Grill And Bake Two-Side
Material : Aluminum Alloy
Coating Durability : 3000 Times
Thickness : 8.0 mm

OT210-155 *3 Layer Coated

GN size : 2/3 GN
Spec. : Grill And Bake Two-Side
Material : Aluminum Alloy
Coating Durability : 3000 Times
Thickness : 8.0 mm