







Meat Grinder



HL-G12SN



AE-G12N

Model	HL-G12SN	HL-G22SN	AE-G12N	AE-G22N
Description	Meat Grinder	Meat Grinder	Meat Grinder	Meat Grinder
Volts	110~120V/60Hz 220~240V/50Hz	110~120V/60Hz 220~240V/50Hz	110~120V/60Hz 220~240V/50Hz	110~120V/60Hz 220~240V/50Hz
Power(W)	750	1125	550	900
Blade Speed(RPM)	170	170	170	170
Dimensions(mm)	250x410x410	300x500x500	420x235x380	465x245x530
N.W. (kg)	25	38	26	36
Certificate	 	 		

Meat Grinder

FPA01



FPA02



FPA03



FPA04



Model	FPA01	FPA02	FPA03	FPA04
Description	Meat Grinder	Meat Grinder	Meat Grinder	Meat Grinder
Volts	110~120V/60Hz 220~240V/50Hz	110~120V/60Hz 220~240V/50Hz	110~120V/60Hz 220~240V/50Hz	110~120V/60Hz 220~240V/50Hz
Power(W)	1000	1200	250	800
Productivity (kg/h)	75	75	85	230
Dimensions(mm)	414.7x175.9x451.2	420x187x440	412x225x268	444x270x506
N.W. (kg)	5.8	5.8	12.3	24.5
Certificate	UL CE	CE	CE	ETL CE



Meat Grinder



FPA05



FPA06



FPA07

Model	FPA05	FPA06	FPA07
Description	Meat Grinder	Meat Grinder	Meat Grinder
Volts	220~240V/50Hz	220~240V/50Hz	220~240V/50Hz
Power	800W	800W	1100W
Productivity (kg/h)	230	250	330
Dimensions(mm)	499x270x550	410x328x517	546x268x558
N.W. (kg)	24.5	24.5	35
Certificate	UL CE	ETL CE	ETL CE

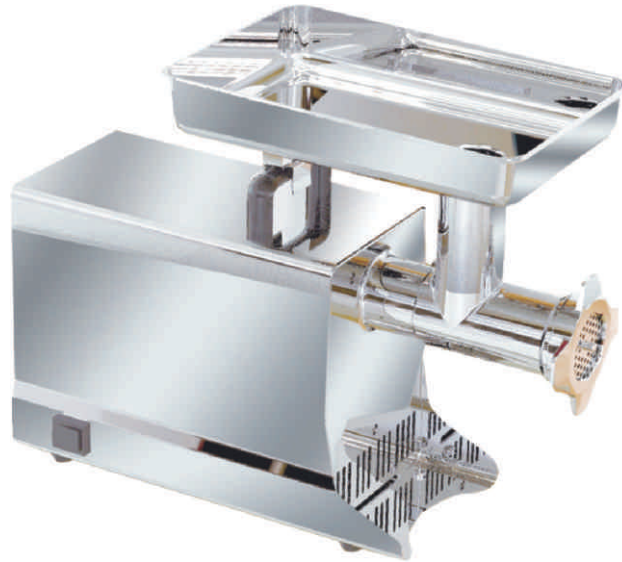
Meat Grinder



FPA09

Model	FPA08	FPA09
Description	Meat Grinder	Meat Grinder
Volts	220~240V/50Hz	220~240V/50Hz
Power	1.0HP	1.5HP
Productivity (kg/h)	220	350
Dimensions(mm)	420x210x502	420x210x569
N.W. (kg)	21.8	25.3
Certificate	ETL CE	UL CE

Meat Grinder



MRG01-F12

Model	MRG01-F08	MRG01-F12	MRG01-F22	MRG01-F32
Description	Meat Grinder	Meat Grinder	Meat Grinder	Meat Grinder
Volts	110V/60Hz 230V/50Hz	110V/60Hz 230V/50Hz	110V/60Hz 230V/50Hz	110V/60Hz 230V/50Hz
Power(W)	250	550	1100	1500
Dimensions(mm)	565x260x465	565x260x465	645x305x500	645x305x500
N.W. (kg)	14	18.4	23.38	28.44
Certificate	ETL CE	ETL CE	ETL CE	ETL CE

Meat Grinder



MRG01-22

Model	MRG01-12	MRG01-22	MRG01-22A
Description	Meat Grinder	Meat Grinder	Meat Grinder
Volts	110V/60Hz 230V/50Hz	110V/60Hz 230V/50Hz	110V/60Hz 230V/50Hz
Power(W)	850	1100	1100
Dimensions(mm)	602x262x460	602x262x454	602x262x454
N.W. (kg)	21.46	22.48	23.14
Remarks	Two Blades	Three Blades	Five Blades
Certificate			

Meat Grinder



Model	FP310-100	FP310-101	FP310-102	FP310-103
Description	Meat Grinder	Meat Grinder	Meat Grinder	Meat Grinder
Volts	220~240V/50Hz	220~240V/50Hz	220~240V/50Hz	220~240V/50Hz
Power	1/2HP	3/4HP	1HP	3/4HP
Speed(RPM)	1500	1500	1500	1500
Production Capacity	80kgs/hr	130kgs/hr	180kgs/hr	130kgs/hr
Dimensions(mm)	480x260x300	500x260x300	500x260x300	500x260x300
N.W.(kg)	23	24	24.5	24
Standard Accessories	Food Pusher x 1 pc, Sausage Funnel x 1 pc, Cutting Blade x 4 pcs, Cutting Plate x 4 pcs			
Certificate	-	-	-	-

Meat Grinder



Model	FP310-107	FP310-108	FP310-109
Description	Meat Grinder	Meat Grinder	Meat Grinder
Volts	220~240V/50Hz	220~240V/50Hz	220~240V/50Hz
Power	1HP	1.5HP	2HP
Speed(RPM)	-	-	-
Production Capacity	250kgs/hr	330kgs/hr	500kgs/hr
Dimensions(mm)	560x290x320	580x290x320	720x310x430
N.W.(kg)	33	34	61
Standard Accessories	Food Pusher x 1 pc, Sausage Funnel x 1 pc, Cutting Blade x 4 pcs, Cutting Plate x 4 pcs		
Certificate	-	-	-

Manual Meat Grinder



FP310-114

Model	FP310-113	FP310-114
Description	Iron Casting Manual Meat Grinder	Manual Meat Grinder
Volts	-	-
Power	-	-
Speed(RPM)	-	-
Production Capacity	-	-
Dimensions(mm)	310x330x140	190x130x290
N.W.(kg)	3	3
Standard Accessories	Cutting Plate x 1 pc, Cutting Plate x1 pc	Food Pusher x 1 pc, Sausage Maker Tool x 1 pc, Cutting Blades x 1 pc, Cutting Plate x 1pc, Spanner x 1 pc
Certificate	-	-

Sausage Stuffer and Meat Grinder



FP310-111



FP310-112

Model	FP310-111	FP310-112
Description	Sausage Stuffer And Meat Grinder	Sausage Filler And Meat Grinder With Large Food Tray
Volts	220~240V/50Hz	220~240V/50Hz
Power	1HP	2HP
Speed(RPM)	-	-
Production Capacity	Meat grinding: 300kgs/hr Sausage stuffing: 250kgs/hr	Meat grinding: 500kgs/hr Sausage stuffing: 450kgs/hr
Dimensions(mm)	630x470x750	970x550x1550
N.W.(kg)	44	150
Standard Accessories	Food Pusher x 1 pc, Stainless Steel Funnel x 1 pc, Cutting Blade x 4 pcs, Cutting Plate x 4 pcs, Footswitch x1pc	Stainless Steel Funnel x 1 pc, Cutting Blade x 4 pcs, Cutting Plate x 4 pcs, Footswitch x1pc
Certificate	-	-